

Y8 Textiles: Knowledge Organiser

Y8 Textiles Key Words

Computer Aided Design	CAD: using computers to make all or part of a product
Photoshop	Imaging and graphic design software
Marbling	A method of surface design, which can produce patterns similar to smooth marble
Pop Art	An art movement that emerged during the mid- to late-1950s
Sublimation Printer	A dye-sublimation printer uses heat to transfer dye onto materials such as a plastic, card, paper, or fabric.
Surface Pattern	A decorative pattern used to enhance the look of a product
Polyester	A synthetic fibre
Cotton	A natural fibre
Poly-cotton	A fabric that consists of cotton and polyester fibres
Annotation	An explanatory note added to design work

Pop Art



Roy Lichtenstein



Andy Warhol

See more on Pop Art at:

<https://www.tate.org.uk/art/art-terms/p/pop-art>

The Design Process

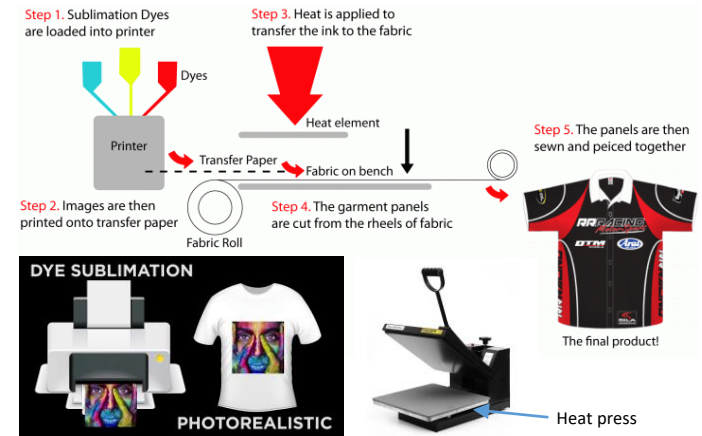
Design Brief	A statement outlining what is to be designed and made
Specifications	A detailed description of the design and materials used to make a product.
Research	Sourcing information for inspiration, investigation and analysis
Ideas	Selection of ideas of 2D and 3D visual communications
Development	Modifications and changes in response to feedback and evaluation against the brief
Final idea	A presentation drawing of chosen idea which satisfies the brief
Manufacture	Making the final outcome
Plan of Make	Type of diagram that represents the process of the product being made
Evaluation	Reviewing strengths and weaknesses of final product and design work

Design Development



Dye-sublimation printing uses heat to transfer images onto products like mugs, fabric and T shirts. These have to contain polyester or have a polyester coating for this method to be successful.

- Create design using graphic software
- Print mirrored image onto sublimation transfer paper
- Place printed design face down onto fabric in the heat press
- Lock heat press down and apply heat for 90 seconds



Marbling

Marbling is a method of surface design which can produce patterns similar to smooth marble or other kinds of stone. The patterns are the result of colour floated on either plain water or a viscous solution, and then carefully transferred to an absorbent surface, such as paper or fabric.



Materials/Equipment

Polyester, poly-cotton, procian dyes, sewing machine, heat press, sublimation printer, transfer paper