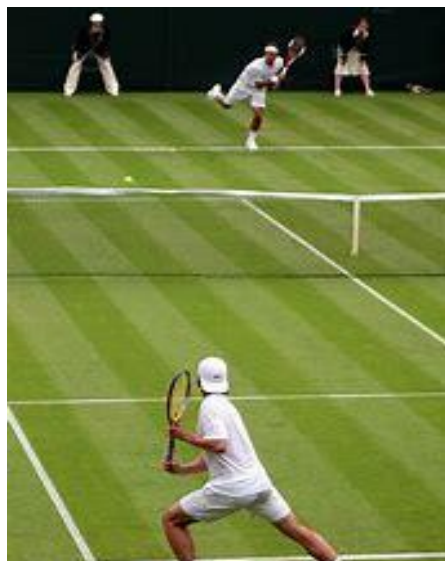




RAINFORD
HIGH

Year 8 Tennis Knowledge Organiser



EVERYONE MATTERS EVERYONE HELPS EVERYONE SUCCEEDS

Tennis

Tennis is played on a rectangular court with a net across the centre. The aim of the game is to hit the ball over the net landing the ball within the court. You win a point every time your opponent is unable to return the ball into the court, misses it or the ball goes in the net.

A tennis match can be played individually, as a singles match, against another opponent or as a doubles match, with two teams of two players.





RAINFORD
HIGH

Tennis Ball



Tennis Racket



Tennis Court



EVERYONE MATTERS EVERYONE HELPS EVERYONE SUCCEEDS



Scoring

No points are scored =

'love'

1 point scored =

15

2 points scored =

30

3 points scored =

40

Winning point scored =

'game'

If the score goes to 'deuce' (40-40), a player must then earn two consecutive points to win the game. After this point in the game, when a player has one point more than their opponent, they score an 'advantage' point.

For a tennis player to win a game, they must win with at least a two-point lead.

If the score goes to 'deuce' (40-40), a player must then earn two consecutive points to win the game. After this point in the game, when a player has one point more than their opponent, they score an 'advantage' point.

A set is won when a player has won six games. If the score is 5-5, a player must win a further two games before they can win the set e.g. 7-5.

To win the match you must win a certain amount of sets: women play best-of-three matches and men play best-of-five matches.

Rules

The game starts with the toss of a coin to decide which player can serve first and which side they serve from.

The server then serves each point from alternate sides on the baseline.

If the server fails to get their first serve they then get take a second serve. If their second serve does not land in the service box it is called a 'double fault' and the point is lost.

If the server touches the net but the ball goes in the service area this is called a 'let' and they can take the serve again.

If the ball hits the net and does not go in the service area, then the point is lost.

The receiver must let the ball bounce once before returning the serve.

The point is then played by using any shot from anywhere on the court.

If a player touches the net during a point they lose the point.

If the ball lands and hits any part of the sideline or baseline the ball is classed as 'in'.

To win the match you must win a certain amount of sets: women play best-of-three matches and men play best-of-five matches.



During a game, the umpire will always read the serving player's score first.



The final score is always read with the winning player's score first.

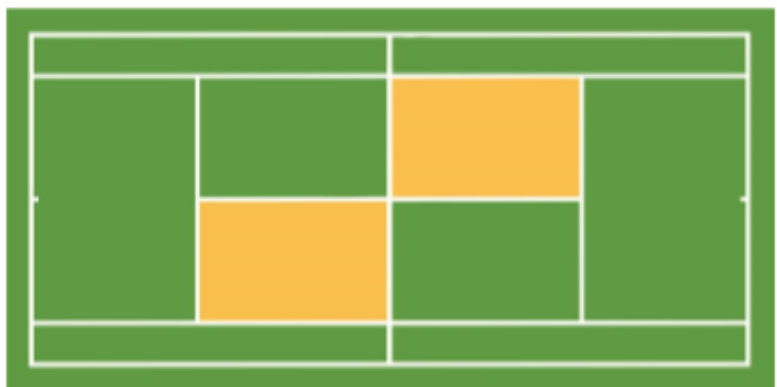


RAINFORD
HIGH

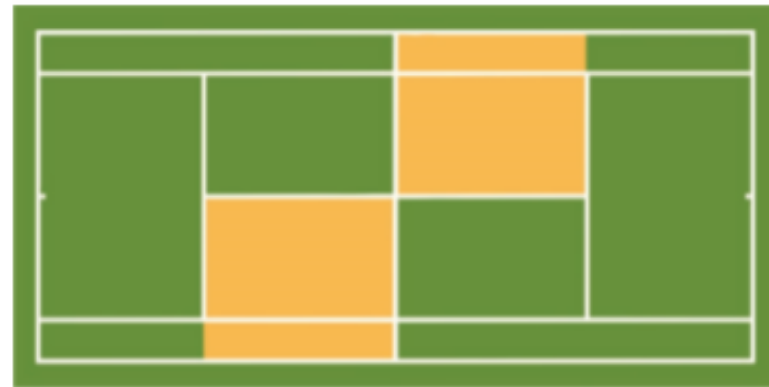


RAINFORD
HIGH

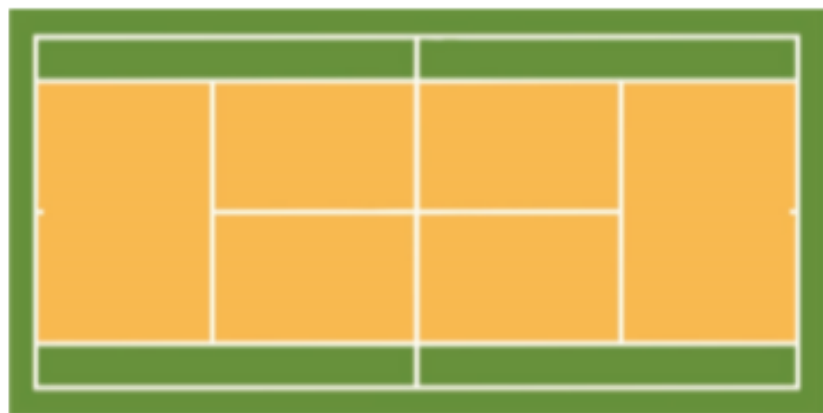
Singles Service Area



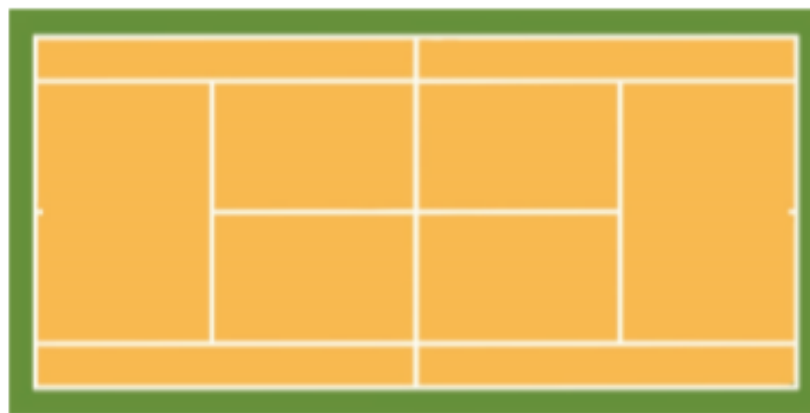
Doubles Service Area



Singles playing area after service



Doubles playing area after service



EVERYONE MATTERS EVERYONE HELPS EVERYONE SUCCEEDS